

P & H



PEACE & HEALING CENTERS

LA CIVIL RIGHTS DEPARTMENT - CITY OF LOS ANGELES



LACR PHC Team



Tristen Marler
PHC Program Manager



Luz Castellanos-Vargas
Community Engagement Specialist



Ronnell Hampton
Principal Equity Strategist



David Price
Director of Racial Equity



Joey Garcia
Director of Strategic Initiatives



Mark Pampanin
Public Information Director



Mina Anochie
Policy Fellow



Mohammed Azad
Policy Fellow



Central City
Neighborhood Partners

Creating
Justice LA

Volunteers of America
Los Angeles

YMCA Metro
Los Angeles

 LA Civil Rights

Proyecto
Pastoral

Para Los Niños

El Nido Family Centers

Bryant Temple
AME CDC

Overview of Peace & Healing Centers

- The Peace & Healing Center Program is utilizing \$2 million in city funds to open Peace & Healing Centers in nine historically excluded and marginalized communities.
- The L.A. Civil Rights Department is contracting eight community-based organizations to carry out the scope of work.
- All contract awardees were chosen after applying through a competitive RFP process. The RFP was released on RAMPLA on September 9, 2022. The RFP Proposal was due on November 4, 2022. Awards were announced on December 4, 2022.



Program Timeline



Phase 1: Program Ramp-Up (February- March 2023)

Site Operators will staff up the PHC sites, contracts will be completed, and community outreach engagement will begin as PHCs open.

Phase 2: Program Delivery (March 2023-November 2023)

Each Peace and Healing Center will provide 20 open office hours per week and 2 events per month that are free and accessible to the community. 1,400 hours will be accumulated by the end of the 9 months of programming.

Phase 3: Program Close-out (November 2023)

Evaluation and Reporting for each Peace and Healing Center will be completed by this time. Reports will be sent to the Mayor's Office and City Council. There will be an end of program celebration and promotion for all site operators hosted by LACR.

Goals of Peace & Healing Centers



I

Build stronger communities.

2

Improve trust in government.

3

Support community organizations.

4

Strengthen gov't-community relations



Utilizing a Multicultural Framework

Peace and Healing Centers will work to reduce the harms of institutional and structural racism by bringing together trusted and equipped:

1. Community-Based Organizations
2. Faith-Based Organizations
3. Social Workers
4. Mental Health Professionals
5. Peace-Builders
6. Community Leaders



Theories of Change Methodology

Peace and Healing Centers will employ this methodology to:

- Identify underlying assumptions and risks of the process
- Utilize sound analyses and consultation with key stakeholders
- Identify solutions that effectively address the root problems
- Explain how a given program or intervention is expected to lead to a specific development change



Theories of Change Methodology

✓ Collective Impact

Collective impact brings people together in a structured way, to achieve social change.

- Collectively designed problem
- Common agenda
- Shared vision for solution

✓ Narrative Strategy

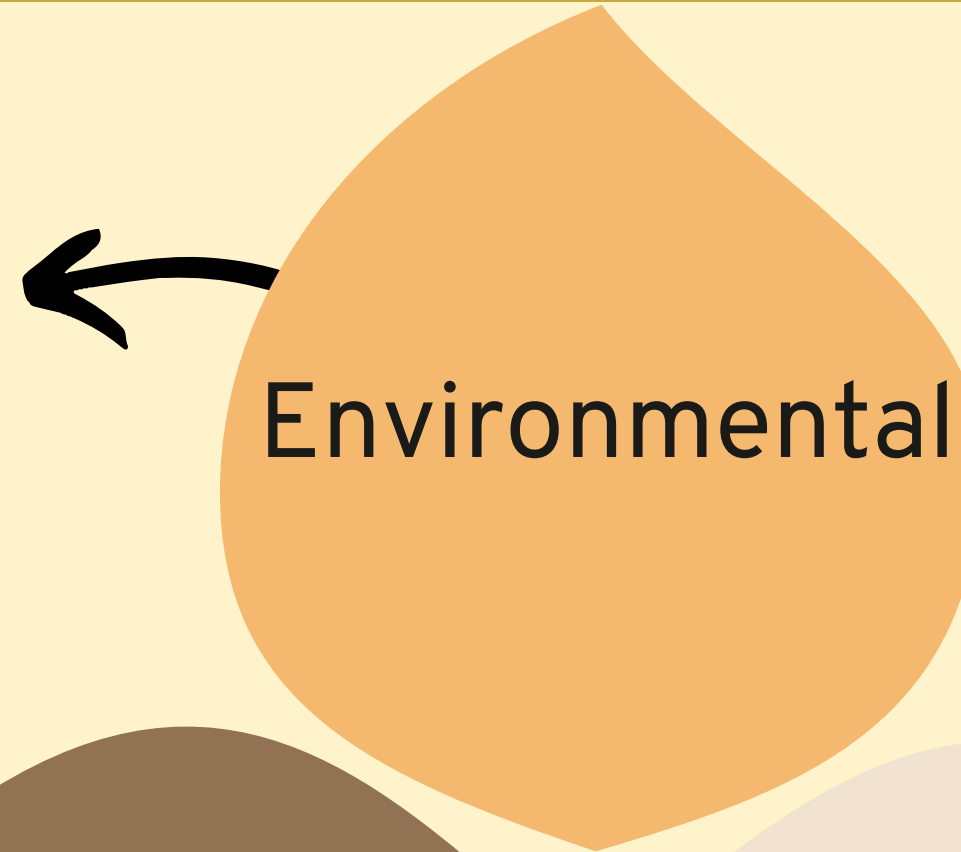
Narrative Strategy places storytelling at the center of social change by linking movement building with an analysis of narrative power

✓ Permaculture Design

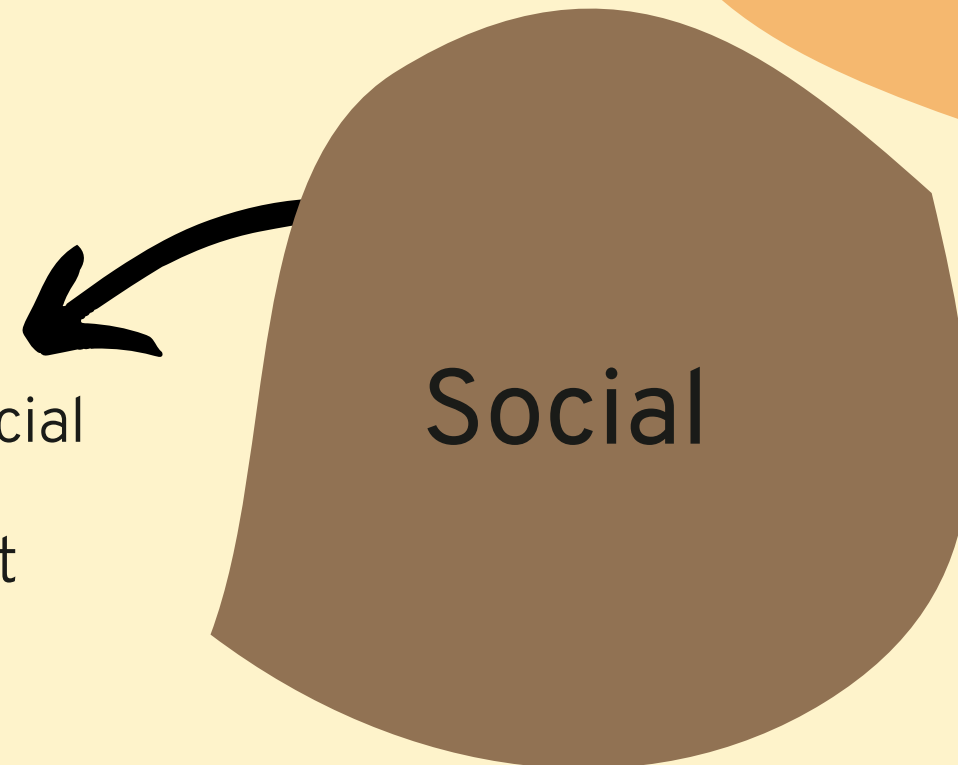
Permaculture Design considers the ethics of land and nature stewardship; building; tools and technology; education and culture; health and spiritual well-being; finance and economics; and land tenure and community governance to advance social change

Three Categories of Peace & Healing

- Intergenerational & interracial community dialogue
- Green Space/Air Quality
- Local Urban Agricultural Food Access
- Environmental Impact Reports
- Safe Route to School Programming
- Accessibility Programming
- Nutrition Workshops

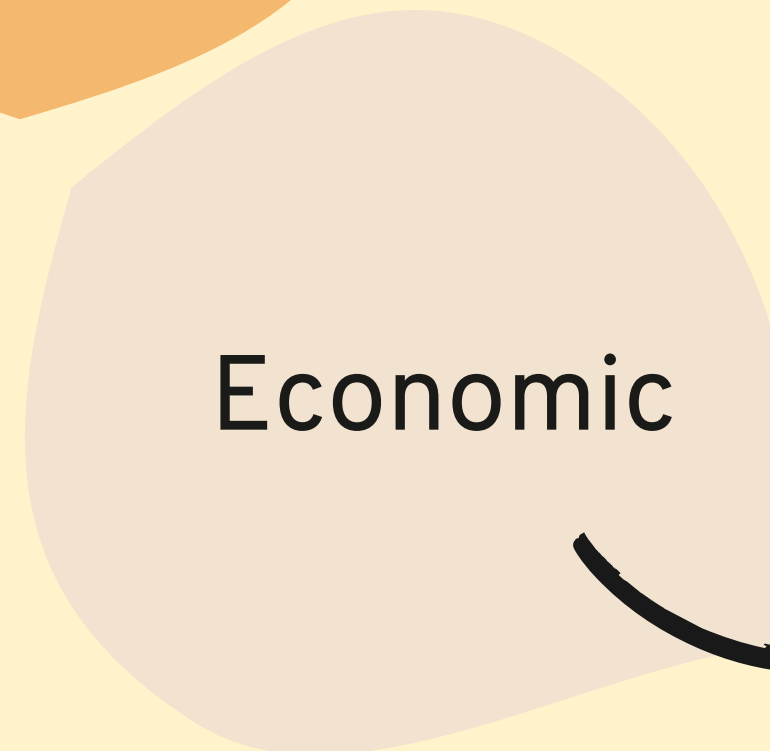


Environmental



Social

- Intergenerational and interracial community dialogue
- Criminal record expungement
- Employment for formerly incarcerated
- Navigating gov't systems
- Death and grieving
- Yoga and meditation

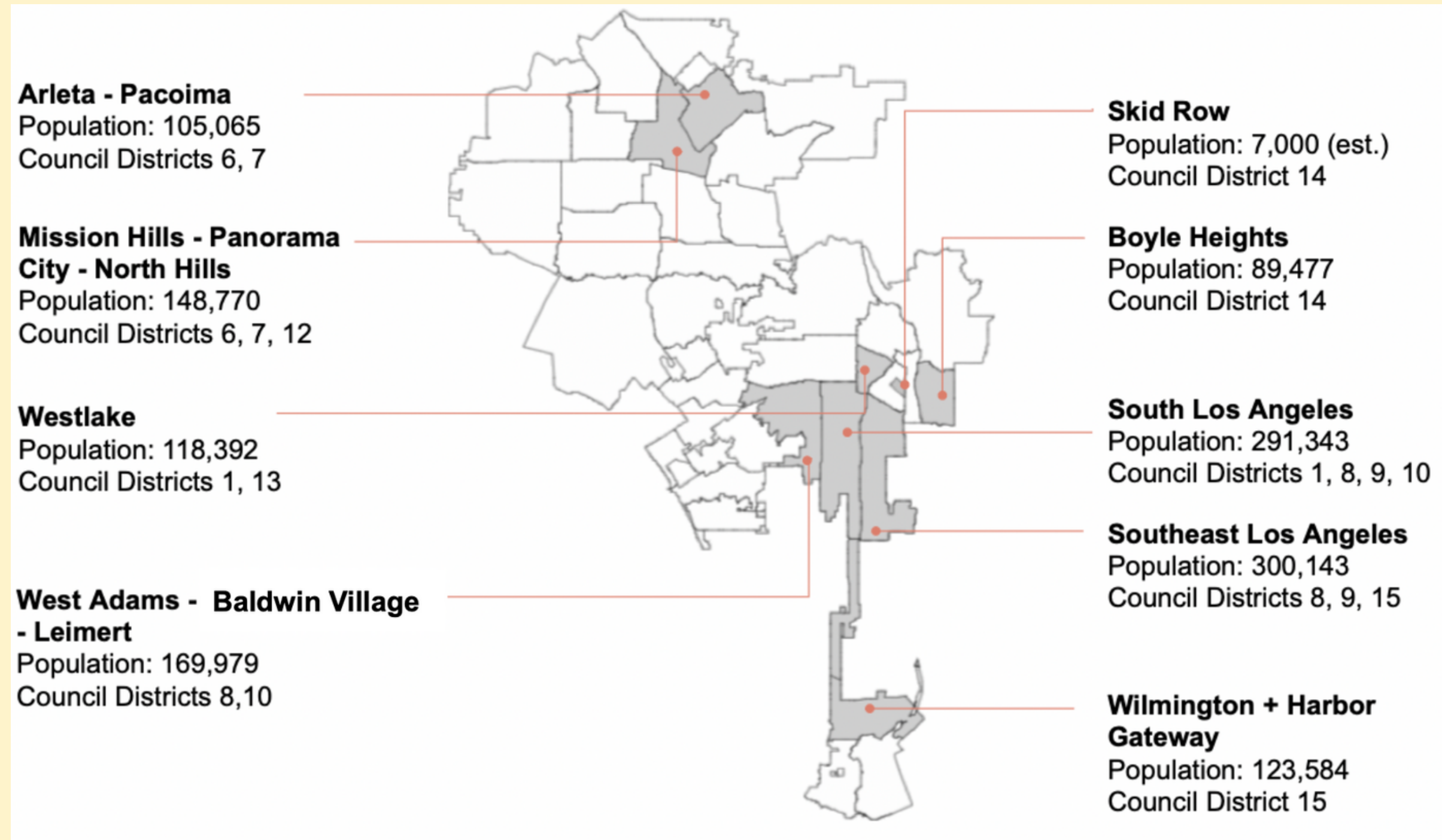


Economic

- Median income
- Financial literacy for individuals and businesses
- Upward mobility
- Access to capital
- Job quality
- Local healthy food economy

Nine REPAIR Zones

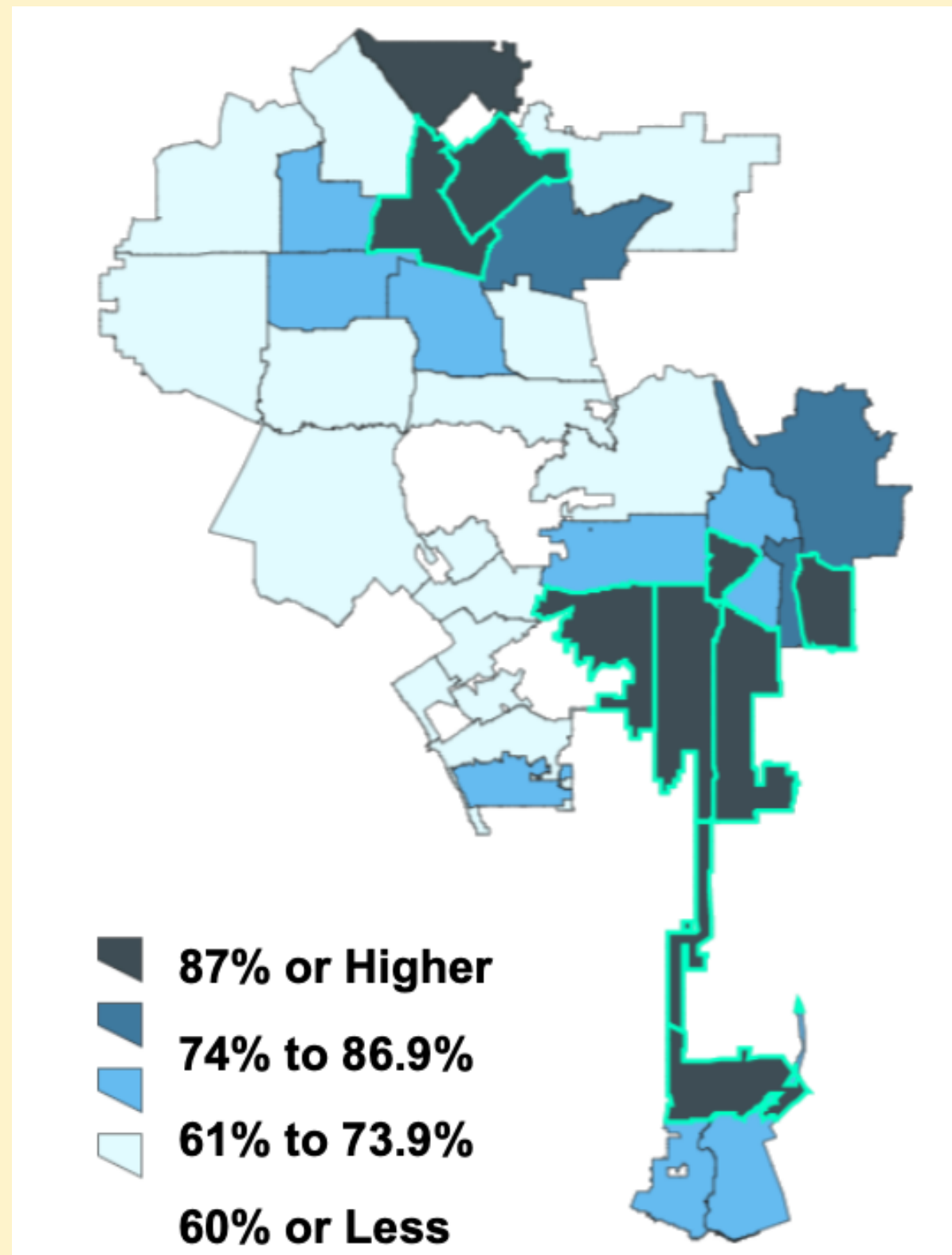
- Completed plans include land surveys, community-identified values, goals, and desired investments
- Helps to guide land use and community investments toward better outcomes such as more green spaces and clean tech jobs
- Vetted with small groups discussions across the community



Criteria for CPA Selection

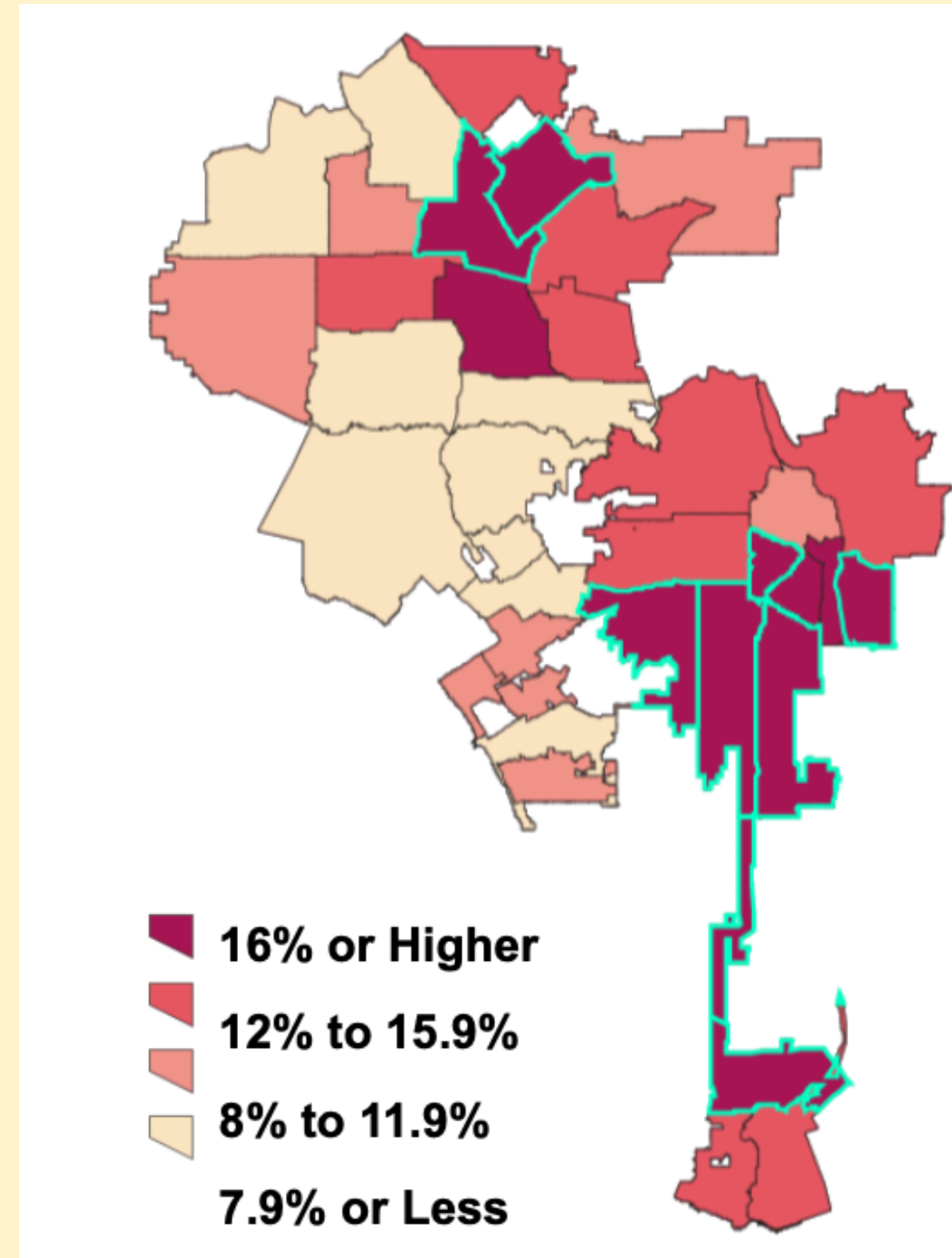
High Percentage People of Color

Percent People of Color
(not white, non-hispanic)



High Share of Population Below Poverty

Percent Below Poverty Line



Population Across All Selected Zones

- 50% of all Angelenos below the poverty line
- 44% of COVID cases in Los Angeles
- 63% of all Black Angelenos
- 50% of all Hispanic/Latino Angelenos
- 28% of all households in Los Angeles
- 47% of LA households without internet
- 87% people of color



Population Across All Selected Zones



Unemployment Rate

5.3% across all of City of L.A.

vs.

7.5% across REPAIR Zones



Rent
Burdened
Households

57% across all of City of L.A.

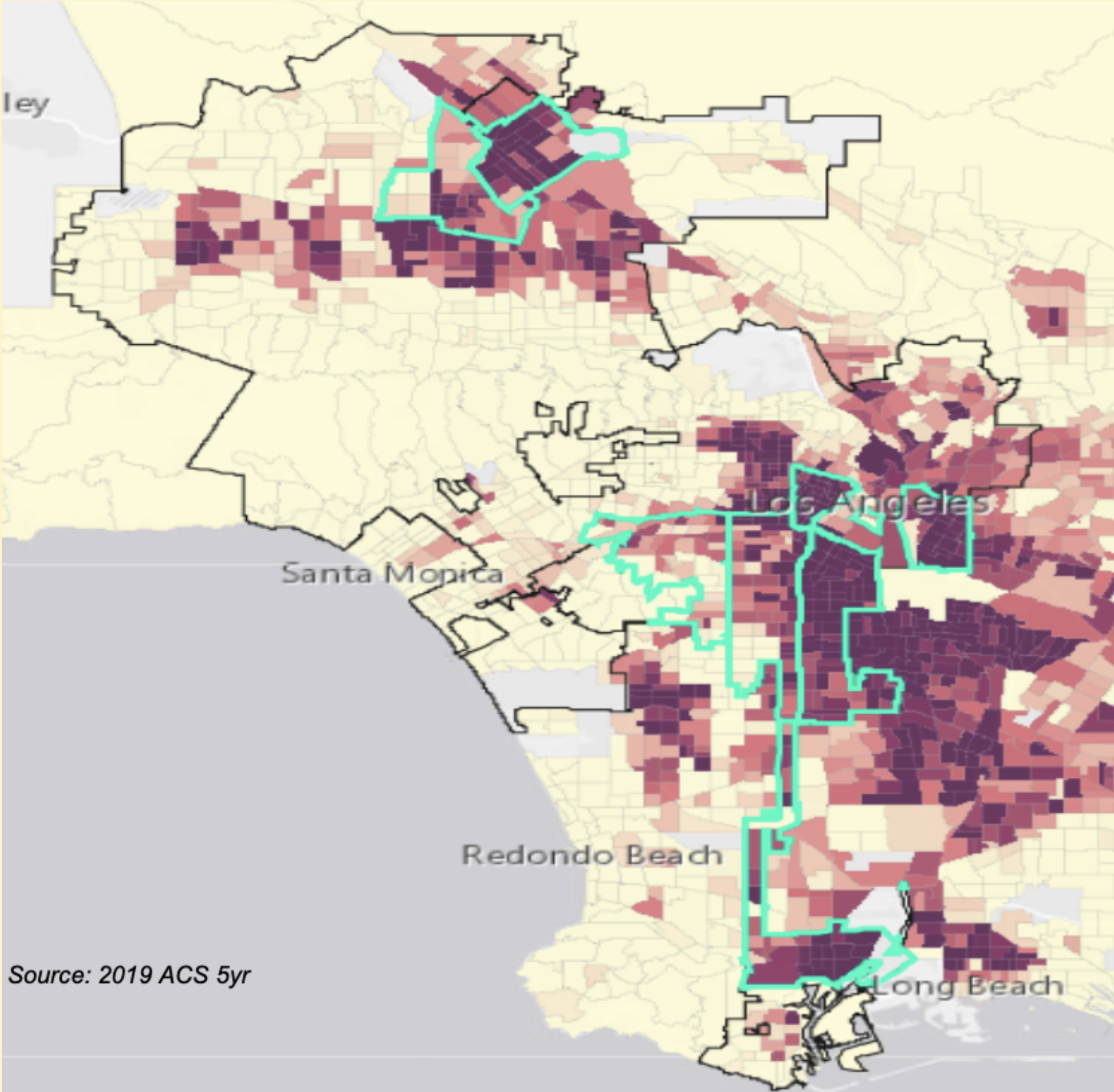
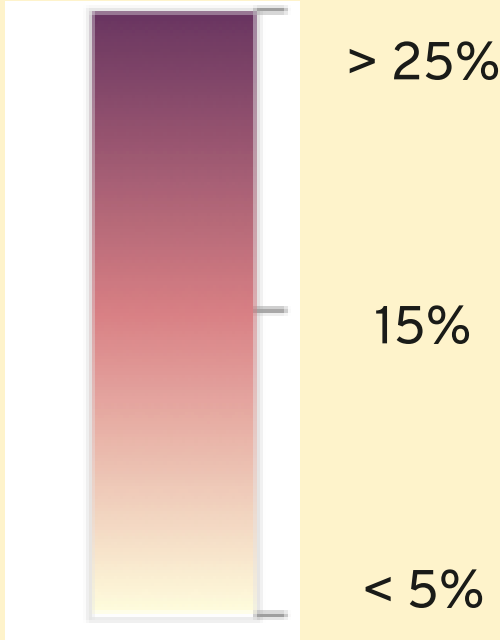
vs.

64% across REPAIR Zones

Additional Data Considered

Percent of Households Overcrowded

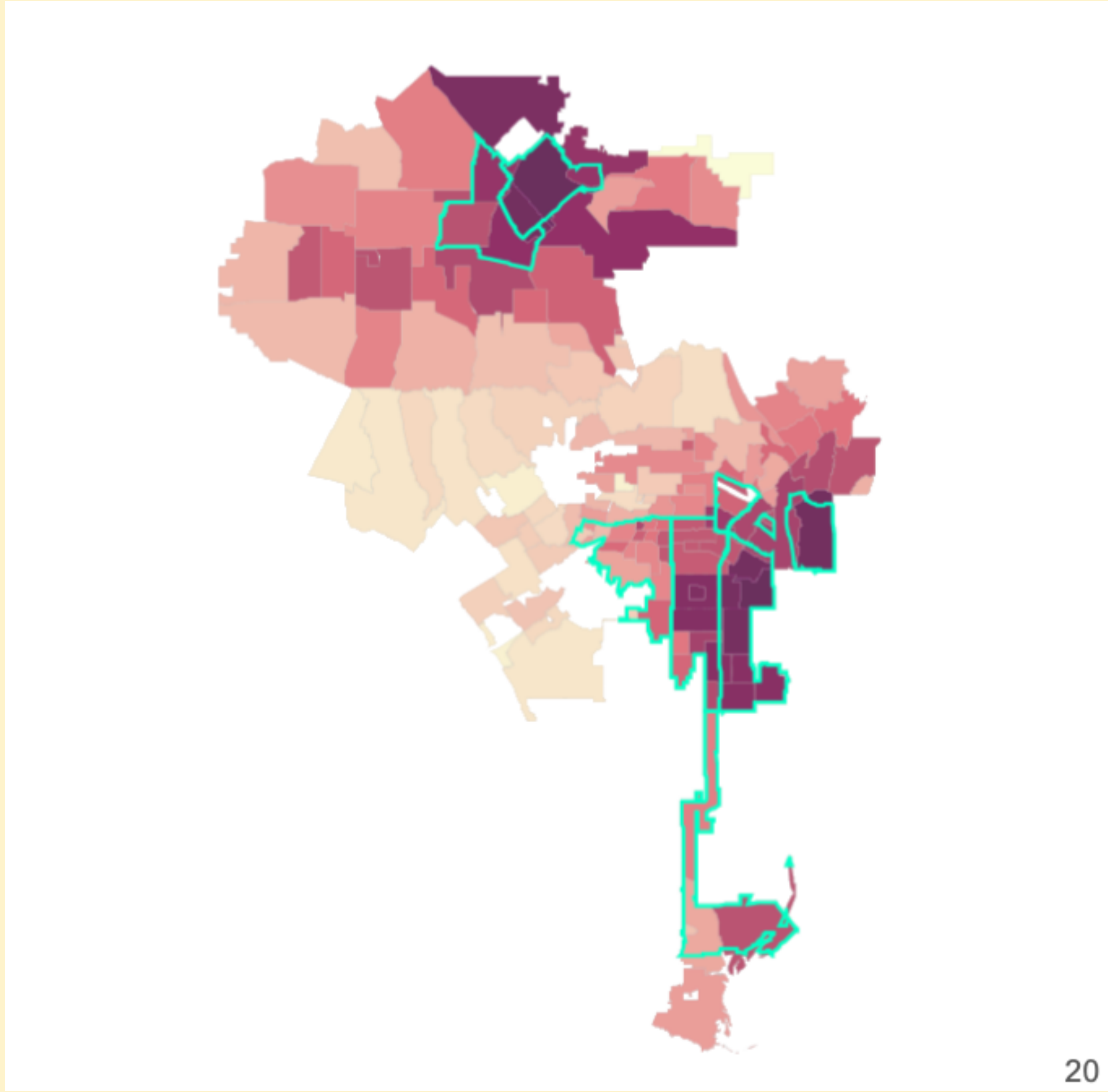
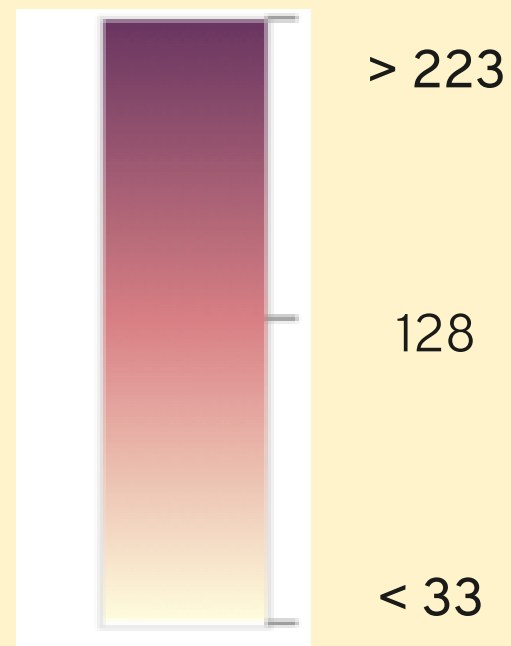
*Overcrowding is defined as more than 1 person per room (includes all rooms in house except bathroom and kitchen)



Additional Data Considered

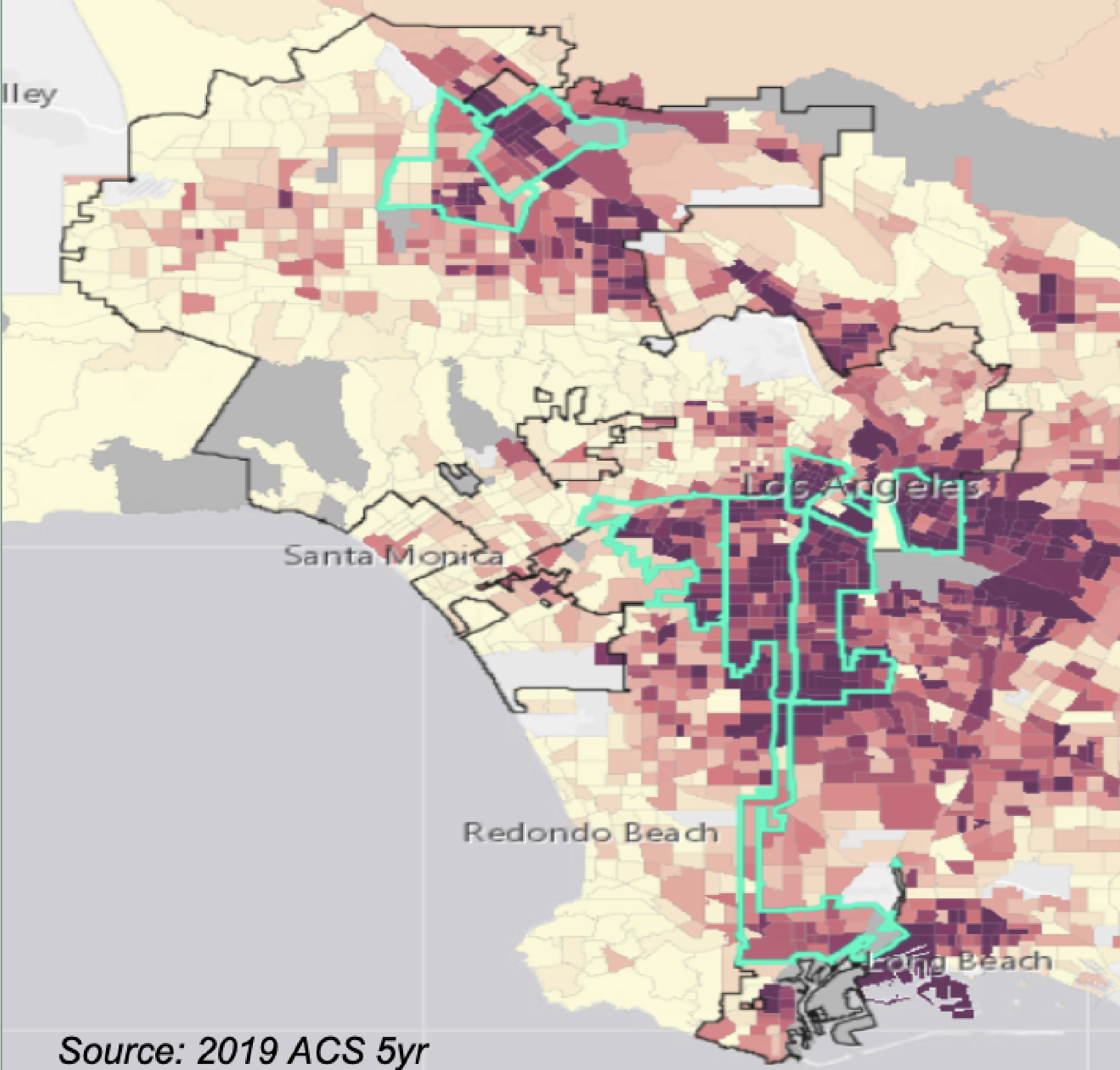
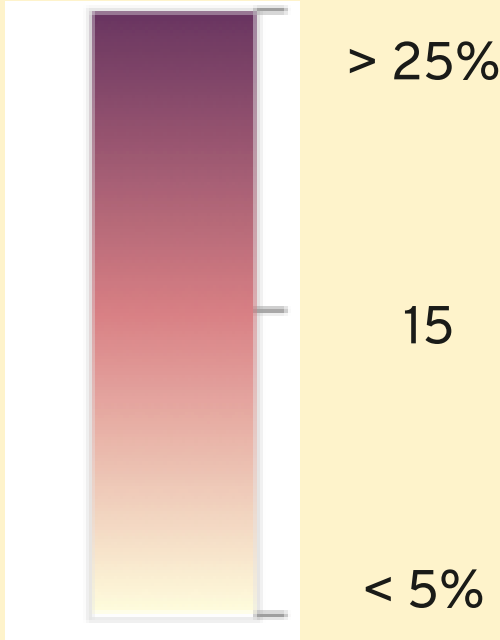
Cumulative COVID-19 Case Rate/1,000 Population

*As of 4/28



Additional Data Considered

Percent of Households With No Internet



Further Methodology Considered

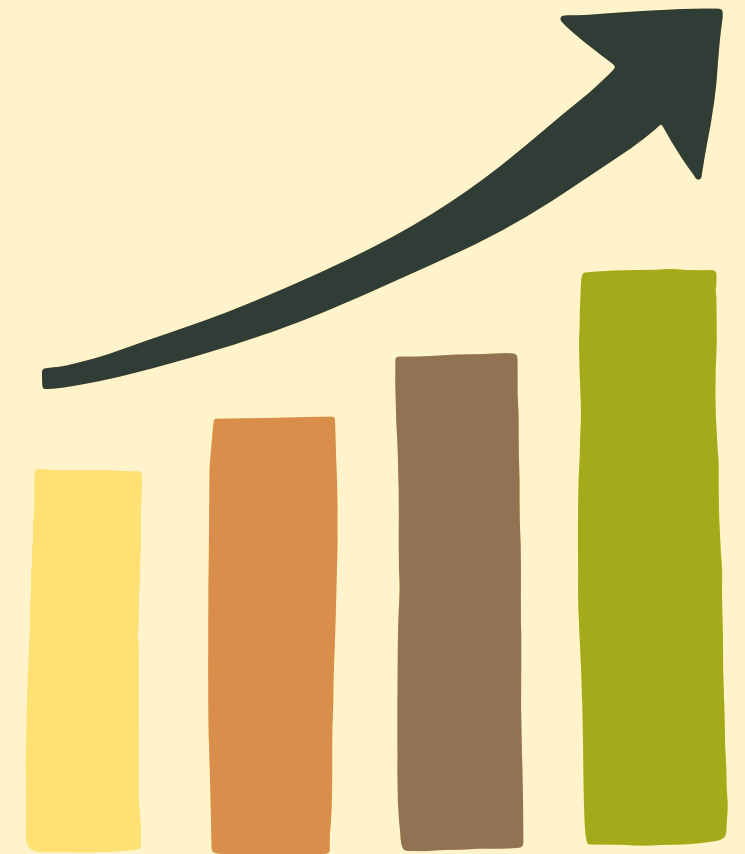
- The CDC Social Vulnerability Index determines a neighborhood's social vulnerability -- defined as a community's ability to prevent human suffering and financial loss in a disaster
- The CalEnviroScreen identifies California communities by census tract that are disproportionately burdened by, and vulnerable to, multiple sources of pollution.
- The Healthy Places Index is an index compiled from 26 indicators in 8 categories: Healthcare Access, Clean Environment, Neighborhood Quality (parks, tree canopy, supermarkets, etc), Housing, Transportation, Education, Social (voting, household characteristics), and Economic

Funding Distribution for PHCs

Organization	REPAIR Zone	Available Funding
Volunteers of America Los Angeles (VOALA)	Southeast Los Angeles	\$194,444.44
Para Los Niños	South Los Angeles	\$194,444.44
Central City Neighborhood Partners (CCNP)	Westlake	\$194,444.44
Bryant Temple AME CDC	West Adams-Baldwin Hills-Leimert Park	\$194,444.44
El Nido Family Centers	Mission Hills-Panorama City-North Hills	\$194,444.44
YMCA Metro Los Angeles	Wilmington- Harbor City-Harbor Gateway	\$194,444.44
El Nido Family Centers	Arleta-Pacoima	\$194,444.44
Proyecto Pastoral	Boyle Heights	\$194,444.44
Creating Justice LA	Skid Row	\$194,444.44
Total		\$1,750,000

Community Goals Through Numbers

- 9 Peace & Healing Centers
- 1,400 hours provided per Peace & Healing Center
- 20 open office hours provided on a weekly basis
- 2 free events held per month at each Peace & Healing Center
- 75% of attendees will report moderate to significant program satisfaction
- 80% of participants will be residents of the REPAIR zone hosting the program



Other PHC Goals

- Qualitative Data will be measured through Theories of Change.
- Site Operators will ensure that each Peace and Healing Center is available for emergency activation in response to emergency events.
- In the event of an emergency, dialogues will be held at the Peace and Healing Center to encourage healing and communication among community leaders, residents, and LA City government officials.
- Peace and Healing Centers will either focus on economic, social, or environmental healing.
- Healing focuses will vary at each PHC since it is catered to the REPAIR zone being served.

Program Evaluator Overview

- Harder + Company Community Research will serve as the program evaluator for the Peace and Healing Center pilot program. They will develop an evaluation approach, methods, and tools to measure the reach, experience, and impact of the nine PHC sites. The findings of the evaluation will be summarized in a report to be shared with City of LA leadership and stakeholders to inform future investments.
- Since 1986, Harder+Company has led hundreds of projects focused on helping organizations understand how they do their work, how to use information effectively, and how to produce change in their fields. They understand the vital role the public sector plays in bringing about social change, as well as common challenges they face in planning, managing, measuring, and learning from their work. Harder+ Company's evaluation team holds deep professional and lived experience evaluating equity and justice focused initiatives that aim to address structural barriers similar to those experienced by community members living in the LA REPAIR zones.

Next Steps

I

Complete 1,400 hours of programming at each PHC in 9 months.

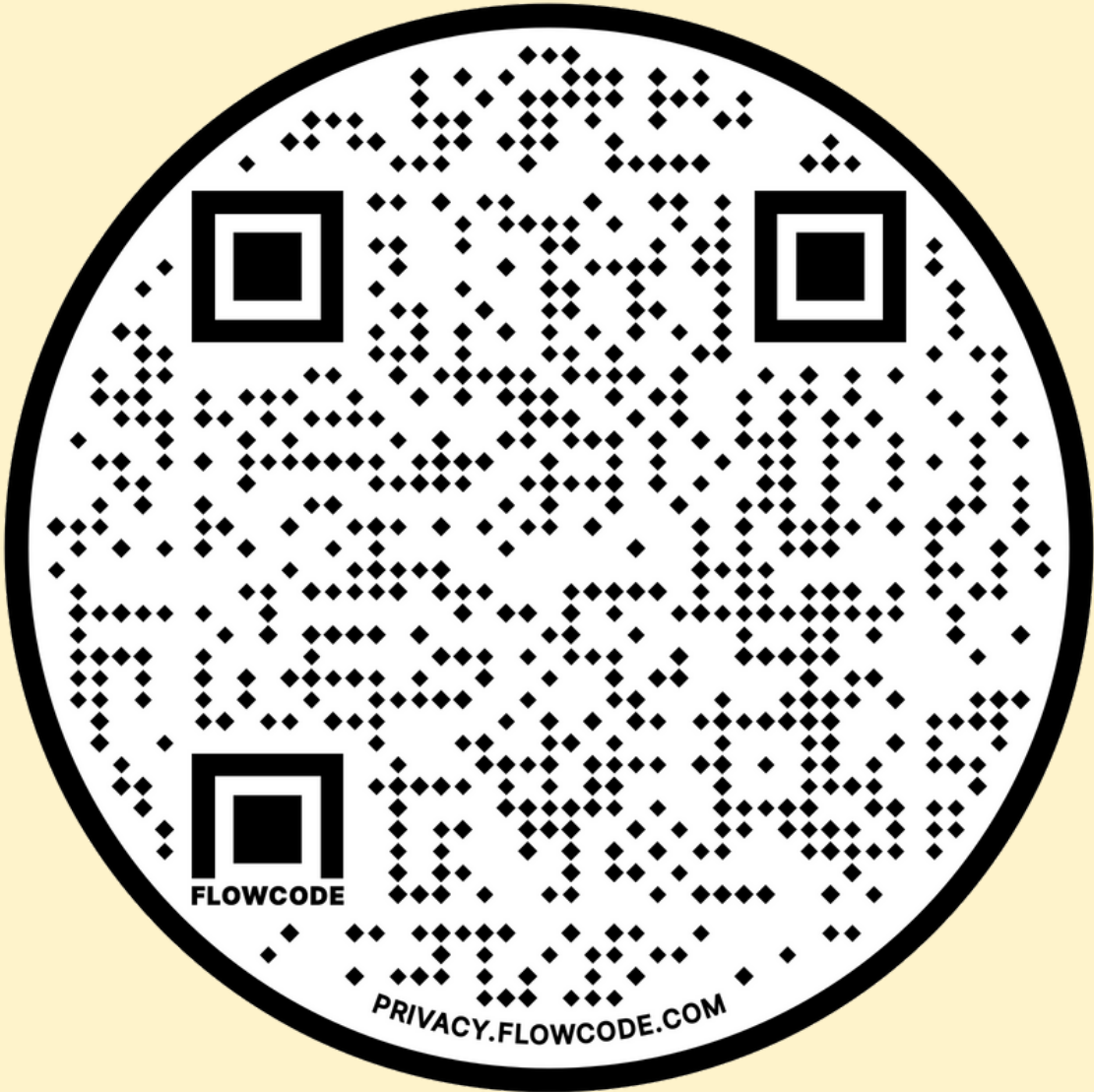
2

Report the results of PHC Pilot Program to City Council and the Mayor's Office.

3

Attain more funding to make PHCs a permanent program that invests in L.A. REPAIR Zones.

**IF YOU WANT TO LEARN MORE,
PLEASE VISIT OUR WEBSITE**



*Thank
you!*

